

FRONT DOOR 6.5" SPEAKER PODS

INSTALLATION

RZ6-DF65

RZR PRO SERIES



2025-Up Polaris® RZR Pro Series



Please read and understand these instructions completely before installation to avoid possible injury, or damage to the accessory or vehicle.

WARRANTY DISCLAIMER

SSV Works offers a warranty on all products manufactured by SSV Works, covering defects in material or workmanship. For Kicker products included with SSV Works systems, SSV Works handles all warranty claims directly, eliminating the need to contact Kicker separately. Warranty coverage is as follows:

- Enclosures/Panels (SSV Works): Limited Lifetime Warranty
- SSV Works Speakers and Subwoofers: Limited Lifetime Warranty
- Kicker Speakers: Limited 3-Year Warranty
- Kicker Subwoofers: Limited 1-Year Warranty
- SSV Works Amplifiers: Limited 2-Year Warranty
- Kicker Amplifiers: Limited 2-Year Warranty
- SWITCH Works Products: Limited 3-Year Warranty

This warranty does not cover damage caused by misuse, improper installation, or unauthorized modifications. For warranty claims, please contact SSV Works directly for assistance.

RZR PRO SERIES

FRONT DOOR 6.5" SPEAKER PODS

PARTS LIST



(RZ-6-DF65)

Front Door Speaker Panels



(B-H2746)

RGB Speaker Harness, 6-Wire w/
Molded Grommet, Tri-Lobe, x2



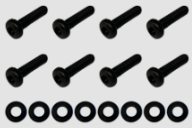
(B-S1560)

Screw, Sheet Metal, PHPS, #4
X .50", SUS304, Black Oxide



(B-HP#7-8)

Hardware Pack, Set of
8 #7x1.25" screws



(B-HP4012)

Hardware Pack, PHTS,
M6x1 x 25mm, and 14mm
OD Washer (8 each)



(B-HP4013)

Hardware Pack, PHTS,
M6x1 x 30mm, and 14mm
OD Washer (6 each)



(B-HPSR-2)

Hardware Pack, Snap Rivet,
Push-In Style, 8mm (x2)



(260-RZ6-HEXT)

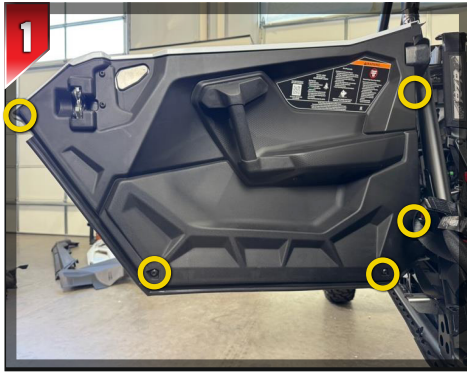
RZ6 Door Pod T-Harness
with Extension, 9 ft

TOOLS NEEDED

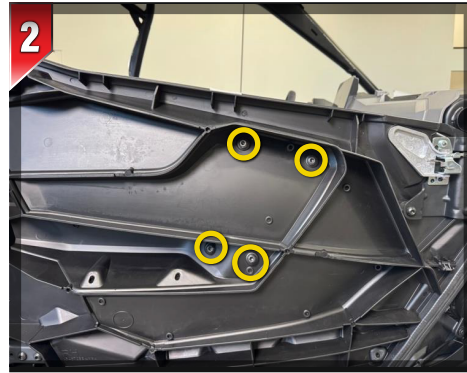
- Panel Popper
- 10mm Socket
- 7/16 Socket
- T40 Torx
- T30 Torx
- T25 Torx



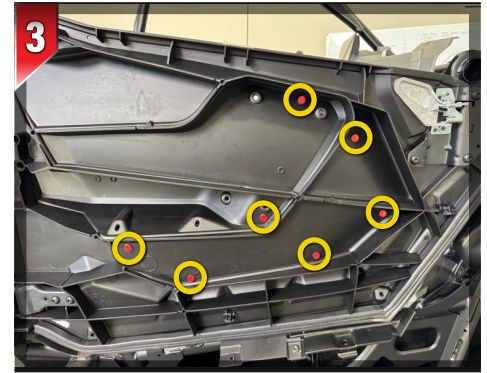
RZR PRO SERIES
FRONT DOOR 6.5" SPEAKER PODS



Remove the three (3) T40 bolts, and three (3) push pins, then pull off the outer door panel.



Remove the four (4) T40 bolts holding on the door handle.



Using a 3/8" drill bit, drill seven (7) holes at the marked locations. The hole locations are the circular tabs protruding from the outer door frame.



Above one of the lower center holes you just drilled, use a 3/4" step bit to drill an additional hole located one and a half (1.5) inches above the hole indicated by the arrow.



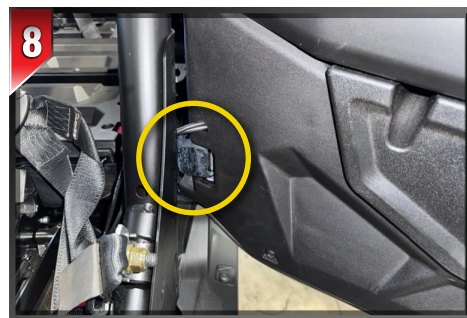
Insert the provided plastic push pin in the top inner hole that was a mount for the factory door handle.



From the inside of the vehicle, feed the speaker harness and RGB harness from the pod through the 3/4" hole, into the outer frame.



Install the speaker pod using the four (4) M6 x 25 mm bolts and three (3) M6 x 30mm bolts. The top front three holes will get the 30mm bolts, we've written their locations here.



Using a step bit, drill a 3/4" hole on the lower door panel, just above the bottom hinge for your wiring.

SSVWORKS[®]
THE ORIGINAL UTV AUDIO BRAND™

RZR PRO SERIES

FRONT DOOR 6.5" SPEAKER PODS

INSTALLATION



818-991-1778

support@ssvworks.com

SSV Works Corporate

SSV Works (location #2)

4610 Calle Quetzal, Camarillo, CA 93012

1212 E Venture Dr. #100, St. George, UT 84790

   / SSVworks



SSVWORKS.COM