

**SUBWOOFER ADD-ON KIT**

# INSTALLATION

**DF11-1VTD**



## **2026 Can-Am® Defender HD11**



*Please read and understand these instructions completely before installation to avoid possible injury, or damage to the accessory or vehicle.*

### **WARRANTY DISCLAIMER**

SSV Works offers a warranty on all products manufactured by SSV Works, covering defects in material or workmanship. For Kicker products included with SSV Works systems, SSV Works handles all warranty claims directly, eliminating the need to contact Kicker separately. Warranty coverage is as follows:

- Enclosures/Panels (SSV Works): Limited Lifetime Warranty
- SSV Works Speakers and Subwoofers: Limited Lifetime Warranty
- Kicker Speakers: Limited 3-Year Warranty
- Kicker Subwoofers: Limited 1-Year Warranty
- SSV Works Amplifiers: Limited 2-Year Warranty
- Kicker Amplifiers: Limited 2-Year Warranty
- SWITCH Works Products: Limited 3-Year Warranty

This warranty does not cover damage caused by misuse, improper installation, or unauthorized modifications. For warranty claims, please contact SSV Works directly for assistance.

**SUBWOOFER ADD-ON KIT**

**CONTENTS**

- **PARTS LIST** ----- 1
- **TOOLS NEEDED** ----- 1
- **VEHICLE DISASSEMBLY** ----- 2
- **INSTALLATION OF AMPLIFIER** ----- 2-4
- **PRODUCT ASSEMBLY** ----- 4
- **INSTALLATION OF SUB ENCLOSURE** ----- 5

**SUBWOOFER ADD-ON KIT**

**PARTS LIST**



**DF-USP10**

Pod, Subwoofer, All Locations, Ported, Defender



**B-V102**

10" Subwoofer, 2 ohm



**SD-PXA4004**

PXA4004 - 4x100-Watt Full-Range Amplifier; RoHS Compliant x 2



**B-PT3607**

Single Port Tube, 70mm Dia x 275mm Long



**B-H4025**

Harness, #8 AWG Fused Power/Ground to SSV 2-Pin, 5 ft Kit



**B-H2703**

Subwoofer Harness, 2-Wire, 14 AWG W/ Molded Grommet



**B-H3874**

Harness, HD11 Factory Low Level Sub Factory Pre-wiring to Kicker 600.1, 3 ft



**B-G2949**

2MM, SUB Enclosure, Subwoofer Gasket, Universal



**B-H3922**

Harness, 2-PIN 14AWG Subwoofer, Kicker (3FT)



**B-MBP3900**

Defender, 400.4/600.1 Amp Tray x 2



**B-MBP3999**

Bracket Pack, Defender, HD11, Sub Enclosure



**B-HP4004**

Hardware Pack, 2x U-nut Clip, 2x 19mm O.D. Washers



**B-W1052**

M6x14 OD Flat Washer (x4)



**B-S2187**

M6x1x12mm Pan Head Screw (x4)



**B-HP#7-8**

Hardware Pack, Set of 8 #7x1.25" screws



**B-S1656**

#7-19 x 3/4", SUS 304, Black Oxide, Phil Pan-Head (X4) \*USED TO INSTALL PORT TUBE TO SUB BOX"



**B-S1560**

Screw, Sheet Metal, PHPS, #4 X .50", SUS304, Black Oxide



**B-HPM616-6**

Hardware pack, set of 6 M6x16 screws and washers, x2



**B-S1157**

Screw, PHPS, M4x0.7x8mm, SUS304, Natural Finish, Nylock (x4)

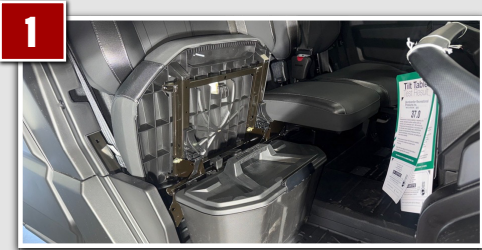
**TOOLS NEEDED**

- **T30 Torx**
- **Philips Screw Driver**
- **Razor blade/Box Knife**



# SUBWOOFER ADD-ON KIT

## VEHICLE DISASSEMBLY



If equipped, remove the front and rear-seat storage container by lifting it up and out.



Remove the rear passenger-side floor mats by simply pulling up on the mats and the Christmas tree clips will come out.



NOTE

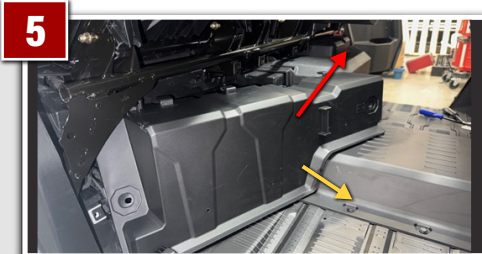
Once the passenger-side floor mat is removed, repeat the process with the center rear floor mat.

NOTE

The area where the A/C vents are located under the front seats is a very tight fit. You will need to pull firmly toward the back of the cab, but it will come free.

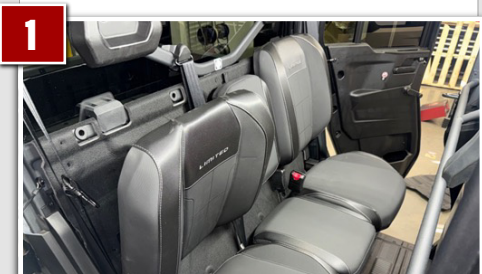


Now you can access and remove the battery cover. To do so, remove the **Two (2)** twist lock pins (circled in **YELLOW**) on each side of the cover. No tools are required, as these will unlock by hand when twisted in a counterclockwise direction.



Once the lock pins are removed, pull the cover toward the front of the cab at an angle (indicated by the **YELLOW** arrow). At the same time, pull the cover outward and upward toward the center of the cab (indicated by the **RED** arrow), and it will come free from the corner.

## INSTALLATION OF AMPLIFIER



Remove the rear seat back rests by pulling them forward to unclip, then lifting them up to remove them.



If equipped, peel back the rear firewall insulation pad. If your vehicle is not equipped with this pad, skip to Step 6.

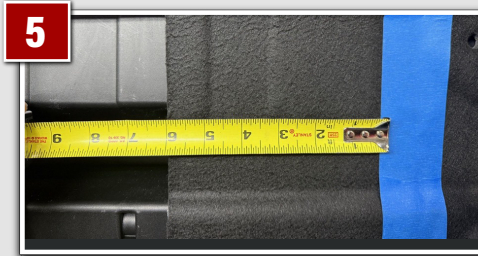


Using a razor blade, cut a 4" x 11" rectangle in the insulation pad for the amplifier. We recommend starting the top of the cut 2" from the top lip shown here at the 11" mark.

SUBWOOFER ADD-ON KIT



Using the blue tape reference line, measure as shown here for your outside edge cut at 6.5”.



From the right-side blue tape reference line, measure 6” and make your cut.



Install the amp plate with the “fork” side facing the top cross bar. Then, use the smaller bracket as a clamp on the bottom cross bar, as shown. Install **Two (2) M6x16** bolts and **Two (2)** washers, leaving them loose until you have checked and ensured it is centered in the space you previously cut out for the amplifier.



Now, using the **Four (4)** supplied Phillips head screws, install the amplifier onto the mounting bracket.

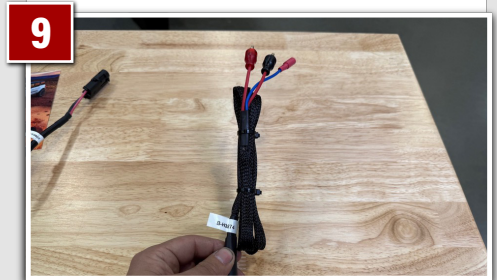


NOTE

If you have the insulation pad, it is recommended to route all harnesses from the bottom near the battery up toward the bottom of the amplifier. While it is possible to remove the entire pad for easier access, this method provides a simpler installation approach.

NOTE

If you do not have the insulation pad, use this section only as a reference for potential harness routing locations.



Locate the **B-H3874** Subwoofer input harness.



Locate the **B-H3922** 2-pin adapter harness.



Locate the **B-H4025** amp power harness.



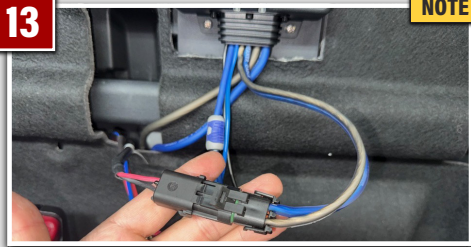
NOTE

Starting with **B-H3874** subwoofer input harness, connect the RCA jacks and the amp **Turn-ON** wire to the corresponding inputs on the amplifier.

NOTE

RED RCA goes to SUB R on the amp, BLACK RCA goes to SUB L on the amp

SUBWOOFER ADD-ON KIT



Next, connect **B-H3922** 2-pin adapter harness and plug it into the corresponding MALE plug from the amplifier.

NOTE

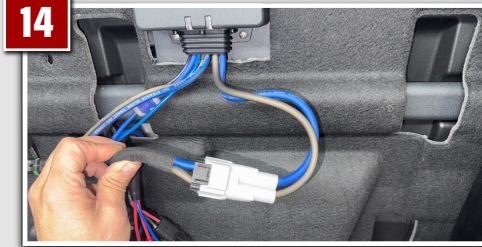
Despite wire color the MALE plug from the amplifier will be the only one that works in B-H3922.



Locate harness **B-H3922** and ensure it remains accessible. Route the harness around the back of the battery cover to make the subwoofer connection, as shown.

NOTE

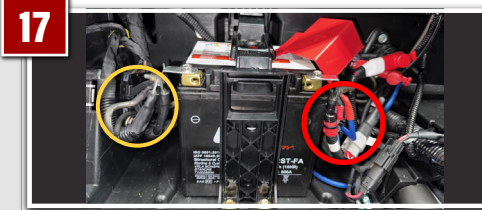
This is a reference step to keep the harness accessible. You will perform this step after battery cover and product install.



Now, take **B-H4025**, the main amplifier power supply harness, and connect it to its corresponding input on the amplifier.



Back at the battery area, begin making the remaining connections. Take **B-H3874** harness and plug it into the factory-supplied 3-pin Subwoofer connector on the vehicle. The connector will be capped as shown; remove the cap and make the connection.



You can now make your positive and negative connections from the main power supply harness **B-H4025**.

PRODUCT ASSEMBLY



Locate bracket **A** and bracket **B**. With the sub box facing you and using **Eight (8) T30 Torx bolts** and washers, mount bracket **A** on the left side of the sub (**circled in YELLOW**) and bracket **B** on the right side of the sub (**circled in RED**). Match the mounting pattern as shown in the image.



Locate bracket **C**. Using **Two (2) T30 Torx bolts** and washers, mount the bracket underneath the port on the side of the enclosure.



Remove the **T30 Torx bolt** circled in **RED** from the running board.

# SUBWOOFER ADD-ON KIT

## INSTALLATION OF SUB ENCLOSURE



NOTE

Place the Two (2) included U-nuts onto the brackets under the seat railing, as indicated here by the YELLOW arrows.

NOTE

The threads on the U-Nut should face toward the REAR of the vehicle.

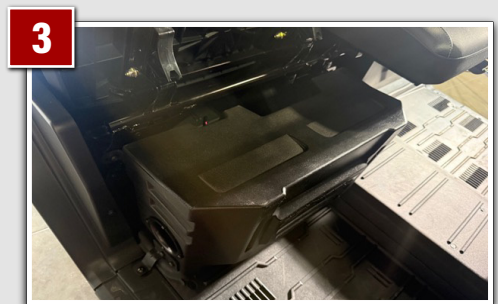


NOTE

Position the sub enclosure in place.

NOTE

Ensure there is enough slack to route the sub enclosure lead up to the crossbar for zip-tying, while allowing the "pigtail" to remain slightly loose.



Using the remaining **Two (2) T30 Torx** bolts, secure the rear brackets to the previously installed U-nuts.



NOTE

Reinstall the factory **T30 Torx** bolt you removed previously to mount the base of the sub enclosure.

NOTE

Reference Step 16 for harness connection.

**SSVWORKS**<sup>®</sup>  
THE ORIGINAL UTV AUDIO BRAND™

*DEFENDER HD11*

**SUBWOOFER ADD-ON KIT**

# INSTALLATION



**818-991-1778**

**Support@SSVworks.com**

**SSV Works Corporate**

4610 Calle Quetzal, Camarillo, CA 93012

**SSV Works (Location #2)**

1212 E Venture Dr. #100, St. George, UT 84790

   / SSVworks



**SSVWORKS.COM**