

**OVERHEAD 4-SPEAKER SOUND BAR w/JVC**

# INSTALLATION

**250-WP-DF4A**

**CAN-AM® DEFENDER**



***Fits: Can-Am® Defender HD10 & HD11***



***Please read and understand these instructions completely before installation to avoid possible injury, or damage to the accessory or vehicle.***

## WARRANTY DISCLAIMER

SSV Works offers a warranty on all products manufactured by SSV Works, covering defects in material or workmanship. For Kicker products included with SSV Works systems, SSV Works handles all warranty claims directly, eliminating the need to contact Kicker separately. Warranty coverage is as follows:

- Enclosures/Panels (SSV Works): Limited Lifetime Warranty
- SSV Works Speakers and Subwoofers: Limited Lifetime Warranty
- Kicker Speakers: Limited 3-Year Warranty
- Kicker Subwoofers: Limited 1-Year Warranty
- SSV Works Amplifiers: Limited 2-Year Warranty
- Kicker Amplifiers: Limited 2-Year Warranty
- SWITCH Works Products: Limited 3-Year Warranty

This warranty does not cover damage caused by misuse, improper installation, or unauthorized modifications. For warranty claims, please contact SSV Works directly for assistance.

# CAN-AM® DEFENDER

OVERHEAD 4-SPEAKER SOUND BAR w/JVC

## CONTENTS

PARTS LIST	1
TOOLS NEEDED	1
BATTERY DISCONNECT	2
DISASSEMBLY	2-3
INSTALLATION	4-8



## CAN-AM DEFENDER

### OVERHEAD 4-SPEAKER SOUND BAR w/JVC

## PARTS LIST

### INCLUDED



**(B-MBP3815)**  
Power Distribution  
Bracket Pack with  
Retaining bracket



**(A-H1485-20A)**  
16 AWG ATM Fuse  
Holder w/10A Fuse,  
Connectors & Zip Ties



**(250-WPDF4A)**  
Can-Am Defender OVERHEAD  
SOUNDBAR, For MRB4, JL, Hertz  
and JVC Radios



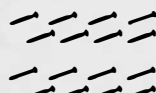
**(B-H2746)**  
RGB Speaker Harness, 6-  
Wire, Defender OH  
Speaker Pod Ext. (X2)



**(B-H3851)**  
Defender RGB/Audio  
Radio Harness



**(B-H3852)**  
RGB Speaker  
Harness, 6-  
Wire, Defender OH  
Speaker Pod Ext. (X2)



**(B-HP#7-8)**  
#7-19x1.25" Phillips Pan-Head  
Sheet Metal Screws,  
SS Black Oxide (x8) (2 packs)



**(B-MR1)**  
Bluetooth Media receiver  
with 2.7" color display,  
camera input, Sirius XM



**(B-WP-A6B)**  
SSV Works WP-A6, 6.5"  
speaker with grey star grill,  
packaged in pairs (X2)



**(B-S1560)**  
Screw, Sheet Metal,  
PHPS, #4 X.50",  
SUS304, Black  
Oxide, \*6

### TOOLS NEEDED

- T-30 Torx Wrench
- T-40 Torx Wrench
- T-20 Torx Wrench
- 10mm Socket
- 7/32 socket
- 13mm Open End Wrench
- 7mm Open End Wrench
- Pliers
- Push pin remover tool
- Wire Crimper



**BATTERY DISCONNECT**

Remove battery cover by taking out the push pins and pull away the panel to expose the battery.



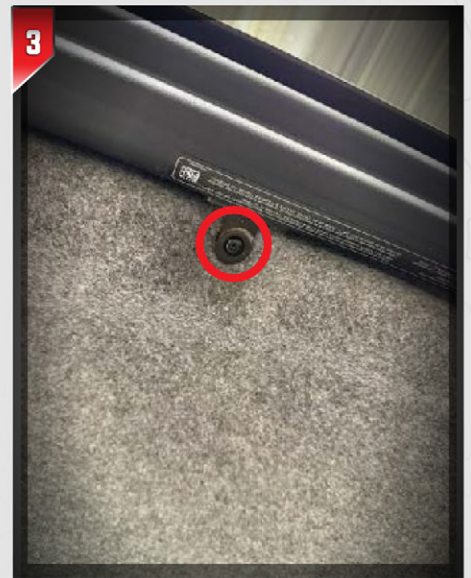
Using a 10mm socket disconnect the battery terminals.

**DISASSEMBLY**

If you have a 6-seater, remove the center roof panel using a T-20 driver to take out the (8) eight screws.



Remove the dome light using a 7/32 socket.



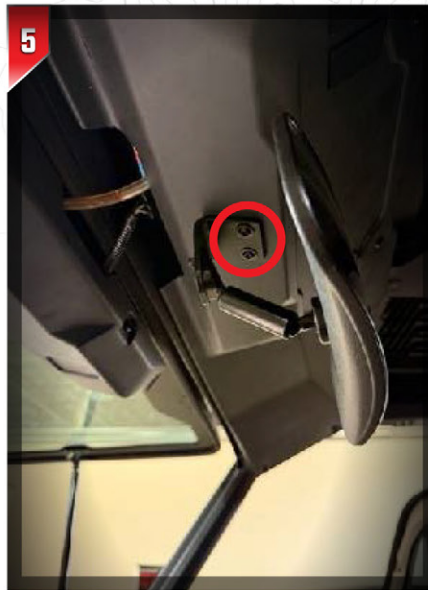
Remove the (2) two side screws by the upper door jams that secures the roof liner using a T-20 driver.



**CAN-AM® DEFENDER**  
**OVERHEAD 4-SPEAKER SOUND BAR w/JVC**



With the two T-20 screws out you can now remove the headliner. Once its down disconnect the dome light where the bullet connectors are.



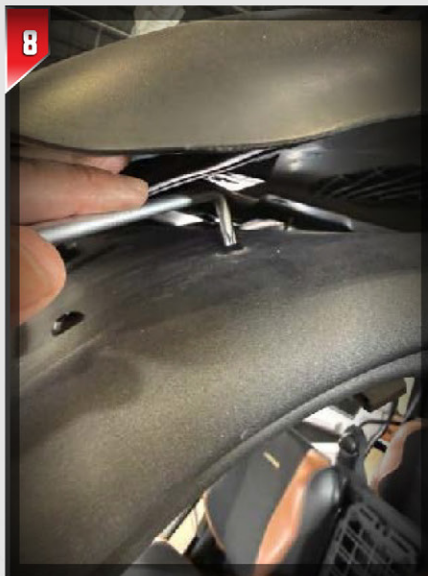
Remove the mirror next using a T-30 driver to take out the (2) two screws.



Remove the (6) six, T-30 screws along the front plastic roof panel.



Using a T-40 driver and a 13mm wrench remove the (3) three screws holding the front of the roof in place. This will allow room to be able to access the screws on the next step.



To remove the (2) two side brackets, use a T-30 driver from the top of the cage and a 10mm socket under the cage.



**CAN-AM® DEFENDER**  
**OVERHEAD 4-SPEAKER SOUND BAR w/JVC**

**INSTALLATION**



1  
If your Defender is a limited or above, you can skip this step. We will now assemble the power distribution bracket using a 7mm wrench.



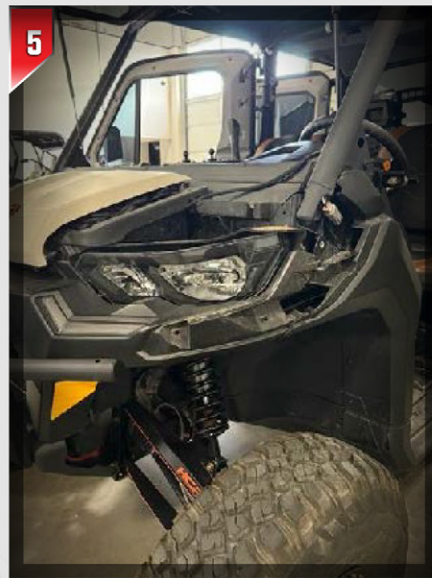
2  
With the side bracket pieces applied, now add in the Timmerman clips with the threading facing in-wards to the 2 middle holes and (2) two side holes on the side brackets.



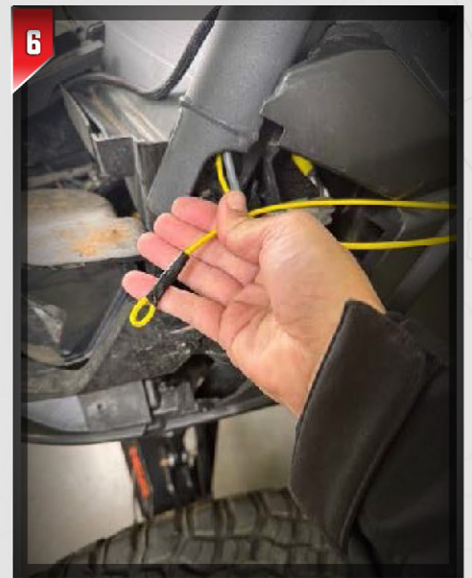
3  
Install the support bracket that will be placed on the outside of the cage with the bolts passing into the cab. Using a 10mm wrench you can now secure the Distribution bracket into place..



4  
Now remove the hood by pulling it forward and up to expose the (2) two push pins on the driver fender..



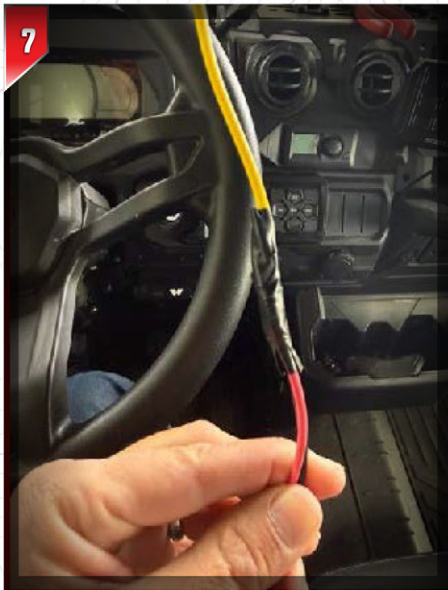
5  
With the two push pins removed, you can now remove the (2) two, T-30 torx screws located under the fender and then pull the fender away..



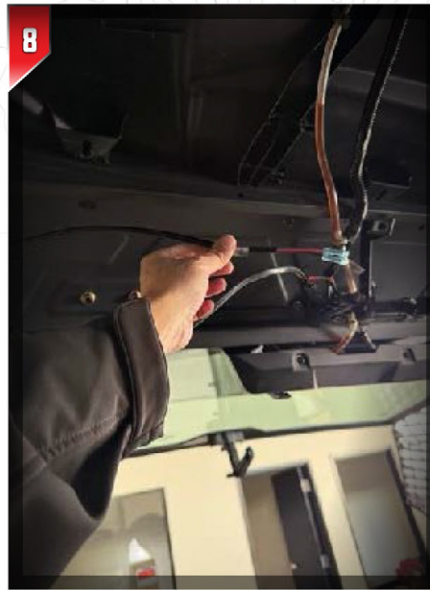
6  
Next to run the power wire (**B-H1474**) you will need to route electrical wire from the top of the A pillar down to the bottom. To make this easier, we're feeding extra wire first to pull the main harness through.



**CAN-AM® DEFENDER**  
**OVERHEAD 4-SPEAKER SOUND BAR w/JVC**



Once you have fed the electrical wire, tape the power and ground wire to it and pull it back up.



Be sure to leave some slack up top to make your connections to the radio.



Pull the center dash panel off to expose the bus bar. This is help on by clips.



Then remove the small tray on the left side of the steering wheel. This will expose the firewall plug where you will run your power wire to the bus bar.



With the power wire fed down the A-pillar you can now pass it thru the side firewall hole and run it over the steering column and to the busbar located at the center of the dash.



Crimp Fuse holder wire (**B-H1485**) to the positive wire on the power harness.



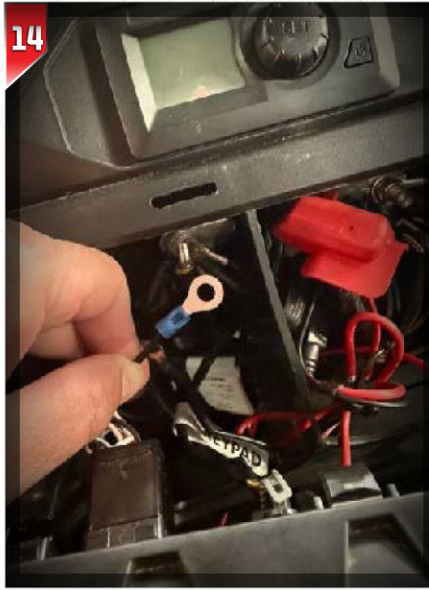
**CAN-AM® DEFENDER**  
**OVERHEAD 4-SPEAKER SOUND BAR w/JVC**

13



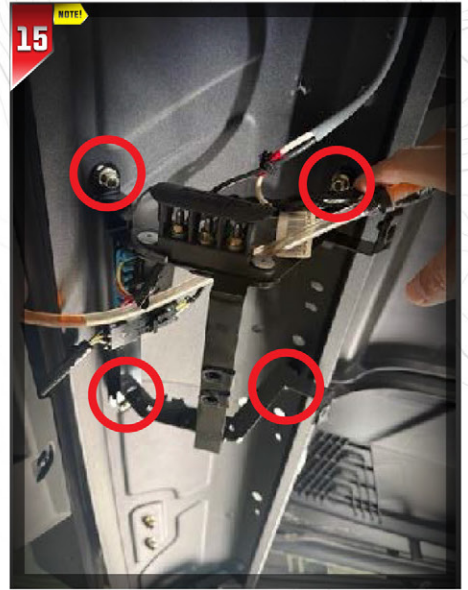
Crimp the provided ring terminal to the end of the grounding wire..

14



Using a 10mm socket, attach the power cable to the positive terminal, and the ground cable to the negative terminal on the bus bar.

15



Loosen the four screws securing the distribution bracket using a 10 mm socket and T-30 Torx driver. Loosen them just enough to allow the speaker brackets to slide into position.

**NOTE!**

At this point, reinstall the three roof screws to secure the roof back in place.

16



Install the two side mounting brackets using the T-30 screws, washers and 10mm nuts.

**NOTE!**

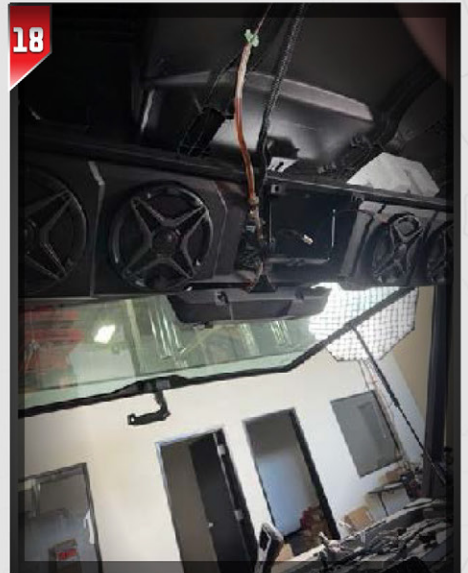
Bracket B installs on the Driver side and Bracket A on the Passenger side

17



Insert the speaker pod starting from the middle to the outside ends and loosely secure them into place. Be sure the power wire and speaker wires are feeding into the middle bracket area. Repeat the same step for the other enclosure.

18

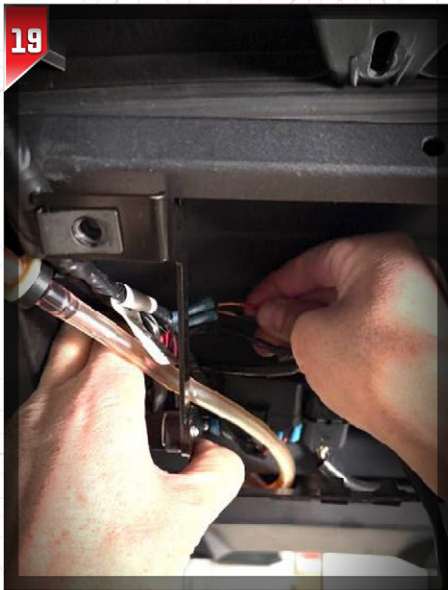


With both pods now in place you can now tighten down all the hardware to secure them into place using the T-30 Torx driver and 10mm socket.



**CAN-AM® DEFENDER**  
**OVERHEAD 4-SPEAKER SOUND BAR w/JVC**

19



Now make your power wire connection to the radio harness (**B-H2367**) by crimping the butt connectors to power and ground.

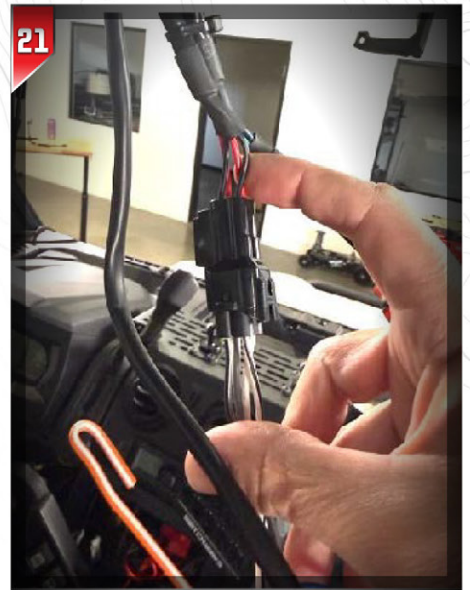
20



Now connect the speaker wires using harness (**B-H3851**).

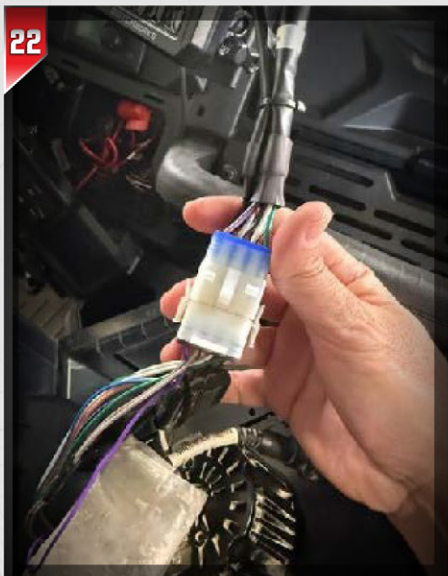
**NOTE!** They are labeled Driver and Passenger, be sure to plug the correct sides in.

21



Then on the other end of (**B-H3852**) plug the speaker output connection to the Grey/White wired plug to the radio harness (**B-H2367**).

22



Now plug the Radio Harness into the main radio plug. Once that is done you can zip tie the wires together to clean it up to fit behind the head unit.

23



Now install the (2) two, T-30 screws into the front of the head unit panel, this will also secure it into place to be able to install the rest of the hardware.

24

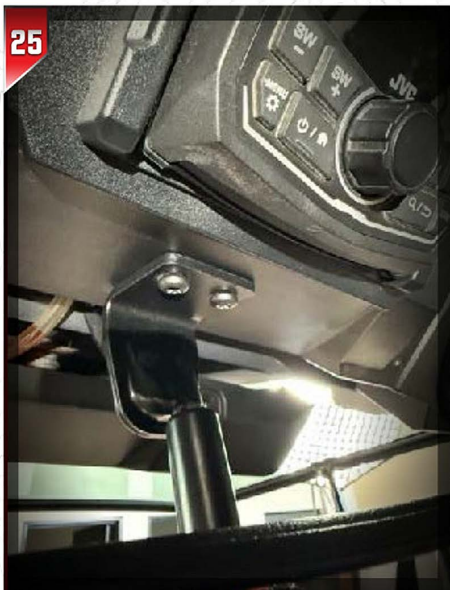


Then install the provided (6) six Phillips head screws. There are (3) three on either side of the head unit.



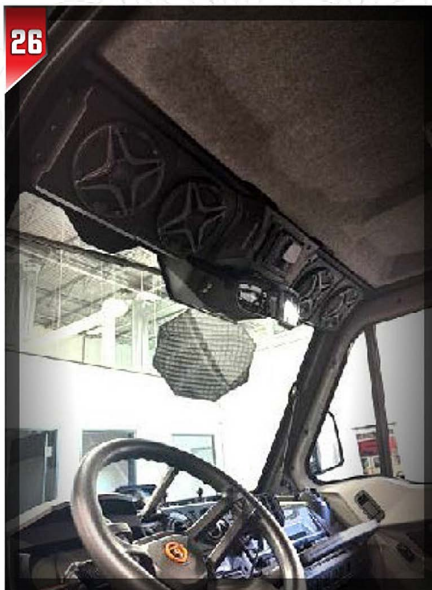
**CAN-AM® DEFENDER**  
**OVERHEAD 4-SPEAKER SOUND BAR w/JVC**

25



If your vehicle is equipped with a rear-view mirror, you can now install it along with the (2) two T-30 screws on the bottom of the head unit panel.

26



With the overhead unit all bolted up you can now make your battery connections and test the unit.

27



With everything working and sounding good you can put the car back together and hit the trails!



**SSVWORKS®**  
THE ORIGINAL UTV AUDIO BRAND™

**CAN-AM® DEFENDER**

**OVERHEAD 4-SPEAKER SOUND BAR w/JVC**

# INSTALLATION



**818-991-1778**

**SUPPORT@SSVWORKS.COM**

**SSV WORKS CORPORATE**

4610 Calle Quetzal, Camarillo, CA 93012

**SSV WORKS (LOCATION #2)**

1212 E Venture Dr. #100, St. George, UT 84790

Featured Speakers Available Separately.